

ZENBOX^{AL} tech sheet



Probe ZENBOX range of lockers are the perfect choice for demanding environments such as Leisure Centres, Swimming Pools, Schools, Golf Clubs, Gyms, Spas, Health Centres and NHS.

They are designed and engineered to withstand the rigours of high use wet area environments where the requirements of design with durability and image are paramount. ZENBOX lockers are designed and engineered to last, where every component is manufactured from materials which will not degrade when exposed to chlorinated and humid atmospheres.



SLOPING TOP AVAILABLE AT ADDITIONAL COST

END PANELS TO MATCH THE DOORS

End panels can be manufactured to add on to the end of locker runs or to the side of each individual locker if required.

EXTENSIVE RANGE OF LOCKS

A full range of locks available including **wet area locks**



AVAILABLE DEPTHS
400mm
450mm
500mm

AVAILABLE WIDTHS
300mm
400mm

Features & benefits

- **Aluminium body** with reduced radius corners give **full width shelf** to back of locker.
- Aluminium shelves, fixed firmly into position **adding rigidity** to the locker
- Doors manufactured from **10mm Solid Grade Laminate**
- Suitable for **wet, humid or dry** environments
- A stylish solution with **plant on doors** giving a **flush finish** and no visible frames
- **Heavy duty self-closing hinges** engineered to prevent the doors opening across adjacent compartment
- A range of **quality engineered locks** available for **wet, humid or dry** environments - see pages 3 & 4
- All lockers are supplied **fully assembled** and can be nested side by side with **no visible gaps**
- Extruded aluminium frames **engineered for added strength** and stability

ZENBOX^{AL} tech sheet



SPECIFICATION

Carcass(Body)	1mm anodised aluminium sheet bodies square internal design. Optional radius internal rear corners can be manufactured if required
Shelves	1.5mm anodised aluminium
Door frames	Engineered extruded aluminium profiles
Hinges	Engineered and designed heavy duty self closing aluminium hinges with stainless steel pin, allowing door to open to 105 degrees in line with the body of the locker.
Doors	10mm Solid Grade Laminate with radius smooth polished edges
End panels	10mm Solid Grade Laminate with radius smooth polished edges
Standard Sizes	Height 1803mm Widths 300mm and 400mm Depths 450mm *Other sizes available upon request
Door Configurations	1, 2, 3, 4 and 6 (standard)
Standard Fittings	Hat shelf in single door lockers
Colours	Door colours from our standard range of Solid Grade Laminate stock colours *Other colours available upon request.
Stand/Plint Options	Locker stands with 25mm adjustable feet inset to the rear to accommodate skirting. Manufactured from 25 x 25 x 1.2mm ERW tube zinc plated prior to painting RAL7035 (as standard). Solid grade laminate plinths can be manufactured to match the Solid grade laminate door colour to give an aesthetic flush finish from top to bottom.
Lock Options	Full wet area ILPT mastered cam lock (2 no keys per lock) Full wet area Hasp and staple, push to turn lock (suitable or padlock supplied by other) Full wet area Coin return lock Full wet area Coin retain lock Full wet area digital keypad lock Dry Area mastered cam lock (2 no keys per lock) Dry Area hasp and staple, push to turn lock (suitable for padlocks supplied by other) Dry Area Coin return lock Dry Area coin retain lock Dry Area 4 digit mastered combination lock **All coin operated locks are available to utilise the new £1 coin
Optional Extras	Inset Number discs (SGL doors) Numbered key fobs Sloping tops Seat/Stands
Additional Locker Extras	Master keys Coat Hooks Coat rail (suitable for 1 and 2 door lockers only 450mm deep) Coat rail with captive coat hangers (Suitable for 1 and 2 door lockers only 450mm deep).

*Coat Rails with or without captive hangers (suitable for Single and Two door 450mm deep lockers only)

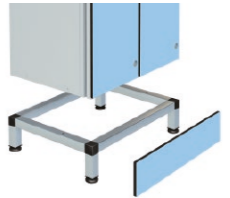
****Aluminium Inset number discs for SGL locker doors 20mm Diameter x 1.5mm thick**

****Master Keys can be provided at an extra charge.

STOCK DOOR COLOURS Body colour will be supplied Silver.

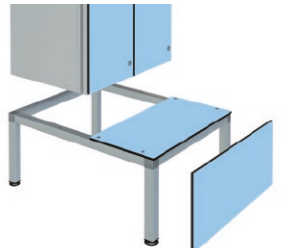


NON STOCK COLOURS Subject to minimum quantity of 30 doors per colour. Hundreds of other colours available from alternative Laminate manufacturers.



LOCKER STANDS & PLINTHS

Available for any number of stands. Includes adjustable feet.

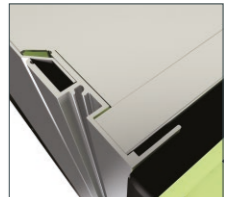


LOCKER SEATS & PLINTHS

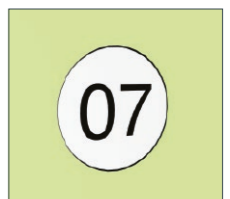
Available for any number of stands. Includes adjustable feet.



CONCEALED SELF CLOSING HINGE



FLUSH FRAME FOR ZERO GAP



OPTIONAL INSET NUMBER PLATES

DRY ENVIRONMENT LOCKS

*Included in locker price. Request lock type at time of ordering.

SAFE AND SECURE BY DESIGN



TYPE A PROBE CAM LOCK*

Even the standard lock has a micro sprung 10 disc lock featuring a massive 3000 serial combinations - all exclusive to Probe. Two keys are included with each standard lock.



TYPE B HASP AND STAPLE*

Attractive design allowing easy use of padlock fitting. Shank diameter maximum 7mm and minimum 5mm. Padlock sold separately.

REPLACEMENT HASP & STAPLE

This Hasp & Staple is available to purchase separately if you need to change your existing lock.



TYPE C RADIAL PIN LOCK - 10,000 COMBINATIONS

This Radial Pin Lock is designed for greater levels of security. Two keys are included with each lock.



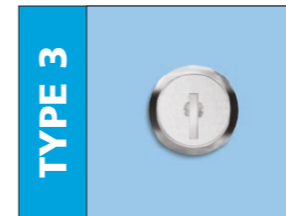
TYPE K-W RE-PROGRAMMABLE COMBINATION LOCK TYPE K-W

Extremely tough and fits existing Probe metal or SGL doors. Re-programmable and easy to operate. 10,000 possible combinations, set and easily changed by users using Override Key, sold separately.



TYPE P NEW RE-PROGRAMMABLE COMBINATION LOCK

User Re-programmable
An effective 4 digit code combination lock with 10,000 possible combinations, making losing keys a thing of the past. Suitable for multi user applications. Master override key sold separately.



TYPE 3 PROBE CAM LOCK*

Even the standard lock has a micro sprung 10 disc lock featuring a massive 3000 serial combinations - all exclusive to Probe. Two keys are included with each standard lock.



TYPE 2 HASP AND STAPLE*

Attractive design allowing easy use of padlock fitting. Shank diameter maximum 7mm and minimum 5mm. Padlock sold separately.

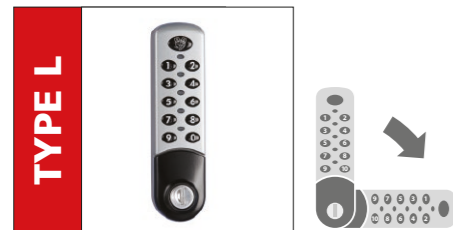
REPLACEMENT HASP & STAPLE

This Hasp & Staple is available to purchase separately if you need to change your existing lock.



TYPE 11 NEW RE-PROGRAMMABLE COMBINATION LOCK

User Re-programmable
An effective 4 digit code combination lock with 10,000 possible combinations, making losing keys a thing of the past. Suitable for multi user applications. Master override key sold separately.



TYPE L DIGITAL COMBINATION LOCK 40,000 COMBINATIONS

- Emergency access using service key
- Simple to program
- Batteries last up to 50,000 operations
- Single user supplied as standard
- Multi user option available (specify when ordering)
- **CAN BE USED HORIZONTALLY** Subject to minimum order quantity. Specify when ordering.



TYPE M The RFID keyless digital combination lock

This lock provides contact less RFID locking and can be used independently or paired with existing wireless systems. Simple to upgrade existing installations and compatible with most wireless standards including RFID and NFC, the lock comes with a wide range of accessories and options.

CAN BE USED HORIZONTALLY Subject to minimum order quantity. Specify when ordering.



TYPE H-£1 DUAL COIN/TOKEN RETURN/RETAIN

These locks are available with coin denominations £/€ or tokens, for either return or retain. **This NEW version will accept both old and new £1 coins.**



TYPE 6 DIGITAL COMBINATION LOCK 40,000 COMBINATIONS

- Emergency access using service key
- Simple to program
- Batteries last up to 50,000 operations
- Single user supplied as standard
- Multi user option available (specify when ordering)
- **CAN BE USED HORIZONTALLY** Subject to minimum order quantity. Specify when ordering.



TYPE 10 The RFID keyless digital combination lock

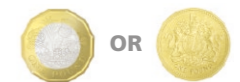
This lock provides contact less RFID locking and can be used independently or paired with existing wireless systems. Simple to upgrade existing installations and compatible with most wireless standards including RFID and NFC, the lock comes with a wide range of accessories and options.

CAN BE USED HORIZONTALLY Subject to minimum order quantity. Specify when ordering.



TYPE 8 DUAL COIN/TOKEN RETURN/RETAIN

These locks are available with coin denominations £/€ or tokens, for either return or retain. **This NEW version will accept both old and new £1 coins.**



WET ENVIRONMENT LOCKS

These locks are suitable for wet environments and are available on both **ULTRABOX** Plastic lockers and **ZENBOX** Aluminium lockers.

Images may differ from items supplied, functions will be equivalent. We reserve the right to alter the design and specification of any product on this page without prior consent.